

Affiliates

A20 – Água, Ambiente e Organização, Lda (A20)
[\[https://www.naviasolutions.com\]](https://www.naviasolutions.com)

Armona Fish Farms – Actividades Aquícolas e Pesca, S.A. (AFF) [<https://armonafishfarms.pt>]

CIIMAR – Centro Interdisciplinar de Investigação Marinha e Ambiental (CIIMAR)
[\[https://www2.ciimar.up.pt\]](https://www2.ciimar.up.pt)

Congelagos - Transformação e comércio de produtos alimentares, S.A. (Congelagos)
[\[https://congelagos.com/pt\]](https://congelagos.com/pt)

Fórum Oceano - Associação da Economia do Mar (FO)
[\[https://forumoceano.pt\]](https://forumoceano.pt)

INESC TEC – Instituto de Engenharia de Sistemas e Computadores, Tecnologia e Ciência (INESC TEC)
[\[https://www.inesctec.pt\]](https://www.inesctec.pt)

Ingredient Odyssey S.A. (IO)
[\[https://www.entogreen.com\]](https://www.entogreen.com)

Safiestela – Sustainable Aquafarming Investments S.A. (Safiestela) [\[https://seaeight.eu/pt\]](https://seaeight.eu/pt)

Savinor – Sociedade Avícola do Norte S.A. (Savinor)
[\[https://www.sojadeportugal.pt\]](https://www.sojadeportugal.pt)

SONAE MC – Serviços Partilhados S.A. (MC)
[\[https://mc.sonae.pt\]](https://mc.sonae.pt)

Sorgal – Sociedade de Óleos e Rações S.A. (Sorgal)
[\[https://www.sojadeportugal.pt\]](https://www.sojadeportugal.pt)

Sparos, Lda. (Sparos) [\[https://www.sparos.pt\]](https://www.sparos.pt)

Universidade de Aveiro (UA) [\[https://www.ua.pt\]](https://www.ua.pt)

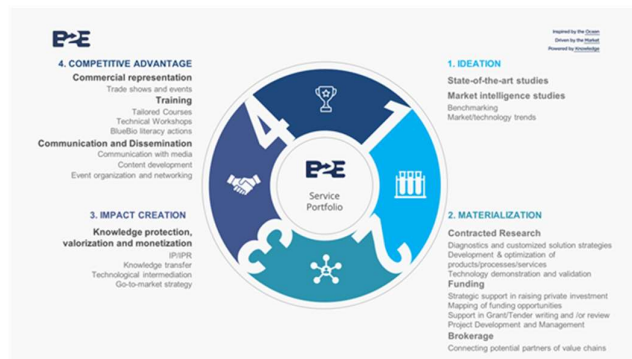
Universidade do Minho (UM) [\[https://www.uminho.pt\]](https://www.uminho.pt)

Universidade do Porto (UP) [\[https://up.pt\]](https://up.pt)

Mission and Challenges

B2E brings together research, education, and business, boosting innovation and creating economic and social value in key areas of the blue bioeconomy: marine living resources, marine biotechnology and aquaculture. We achieve this via a comprehensive Service Portfolio and by understanding market needs, to then define, onset and implement its priorities, objectives and targets, creating new solutions and projects to accelerate innovation and economic growth.

Core Activities



Contacts

Elisabete Matos: Email: ematos@b2e.pt

Site: www.b2e.pt

Facebook and LinkedIn: [@B2E Blue Bioeconomy Colab](#)

Instagram: [@b2ebluebioeconomycolab](#)

Youtube: <https://www.youtube.com/channel/UCRRRx3acLhTIP3JpRQQyiuQ>

Contribution to the All-Atlantic Ocean Research and Innovation Alliance

Relevant thematic area



Relevant tools and activities for collaborative research and innovation

- Consumer awareness campaigns for European aquaculture products acceptance
- Monitoring financing opportunities within Blue Bioeconomy
- Organization of networking events within the Blue Bioeconomy sector
- Cocreation of multiuser platforms for valorization of bio marine coproducts